



“Your first time in Torino: City-Tour”

Accessible itinerary verified by Turismabile



www.turismabile.it
segreteria@turismabile.it

Piemonte without limits



Piazza Castello- Palazzo Madama:

- both the arcade area (in front of the touristic office of Torino) both Piazza Castello have good paving for accessibility's sake: it's plain with big stone plates with small joints (photo 1, 2). Sometimes, because of the need of draining water, the coplanarity of paving is interrupted by an unbroken row of stone plates shaped like a wedge (photo 4) and therefore with a depression which can be over one by a person on a wheelchair, simply by paying attention to it.
- The part of the square towards the Teatro Regio and via Po has a paving in porphyry cubes which are enough practicable.
- The highest part on the side to Via Po, with the monument to Emanuele Filiberto of Savoia-Aosta, is inaccessible due to the presence of 2 steps (photo 5).
- The pedestrian crossing (not reported on the ground) present at the end of the arcade of Piazza Castello (always on Torino tourist office's side) with via palazzo di Città, has a stone plates paving more disconnected and with more uneven joints wider than the pavement (photo 3).



Photo 1



Photo 2



Photo 3



Photo 4



Photo 5

Royal Palace (Palazzo Reale)

The paving of the piazzetta Reale is easily practicable because is all in plain:

- With a wide central part, paved with large stone plates and with very small joints,
- With two side areas of cubes of porphyry (photo 6).
- It 's clear that, to facilitate pedestrian mobility, is better to go along the central part.
- The arcade area connecting the Piazzetta Reale with via San Giovanni is also easily practicable (photo 7).



Photo 6



Photo 7

The Dome and the Porte Palatine from Chiablese Palace

- The floor, side Chiablese Palace, also in large stone plates and with small joints is easily practicable
- Next to the pedestrian path along the Chiablese palace, there is a row of stone plates shaped like a wedge and therefore with a depression which can be overcome by a person in wheelchair with special attention.
- More difficult the area surrounding the Dome, because the paving, in stone plates has sometimes large joints and slightly irregular surfaces (photo 10, 11).



Photo 8



Photo 9



Photo 10



Photo 11



Photo 12

At this point the City Tour can:

1. get close the Porte Palatine arriving until piazza Cesare Augusto (**Itinerary 1**);
2. observe the Porte Palatine from the distance, i.e. from piazza San Giovanni, and go on with the itinerary towards Largo IV Marzo and crossing via XX Settembre with the crosswalk (photo 23) that does not present any particular difficulty except for those linked to the presence of tram tracks (**Itinerary 2**).

Itinerary 1. Porte Palatine: the itinerary goes through piazza San Giovanni, goes in front of the building of Torino City Hall, turns left in via della Basilica and reaches piazza Cesare Augusto (Porte Palatine):

- in front of the Dome, you need to cross carefully because of the tram tracks (photo 12);
- the pedestrian cross in via XX Settembre (between piazza san Giovanni and largo IV Marzo) which brings to largo IV Marzo, even if there are the tracks, it's practicable (photo 23).
- After the City Hall building, you turn left in via della Basilica (photo 13) and cross it to reach the area surrounding the Porte Palatine (photo 14);
- The entrance and the visit to the area surrounding the Porte Palatine (both the entrance, photo 15, and the exit, photo 16) is very problematic for people on wheelchair for the presence of gravel paving and of a consistent part of lawn (photo 17). The alternative is to go on the area with large plates which goes along the buildings on the left of the Porte Palatine (photo 18).
- It then heads off to largo IV Marzo through Via Porta Palatina: the pedestrian crossing of via Basilica is sufficiently smooth as the pavement is acceptable lower slope and the floor in porphyry is not particularly problematic (photo 19);
- It's better to follow the sidewalk to the left (which has the Porte Palatine behind) because it is easier to practice, (photo 20 with crossing at the bottom, photo 21) as the opposite sidewalk has some particular concern for the presence of irregular blocks of porphyry (driveway in front of the entrance to underground parking, photo 22).



Photo 13



Photo 14



Photo 15



Photo 16



Photo 17



Photo 18



Photo 19



Photo 20



Photo 21



Photo 22

Itinerary 2.

- The already mentioned pedestrian crossing of via XX Settembre (between piazza san Giovanni and largo IV Marzo) which brings to largo IV Marzo, even if there are the tracks, it's practicable (photo 23).
- You go on along via IV Marzo: the sidewalk, even if narrow, is easily practicable (photo 24).
- If you want to reach the small tree-lined square of largo IV Marzo, you cross via IV Marzo (crossing through circular field in porphyry of acceptable inclination, photo 24, 25) and you get, after on more pedestrian cross in porphyry of acceptable inclination, (photo 26), in front of Casa Broglia (photo 27).
- From there you go on to largo IV Marzo/start of via Torquato Tasso with the paving sometimes disconnected, with more irregular stone plates, with large and sunken joints (photo 28).
- You cross at the beginning of largo IV Marzo (elevated pedestrian cross, photo 29) to reach the other side of via IV Marzo. From here you turn right and enter via Porta Palatina.



Photo 23



Photo 24



Photo 25



Photo 26



Photo 27



Photo 28



Photo 29

Via Porta Palatina

- The two sides sidewalks, paved with large stone plates, are of limited width (75 cm the one on the left and 120 cm that on the right) (photo 30, 32, 33) the road is always made of stones plates but superficially.
- In front of the Church of the Holy Spirit and at the beginning of via Cappel Verde, the road as half-circle porphyry motif and stone rays (photo 34).
- The follows via Porta Palatina with the same characteristics, with two sides sidewalks, paved with large stone plates of limited width and also interrupted by manholes and gratings (photo 35), with the central roadway in stone plates with quite large.



Photo 30



Photo 31



Photo 32



Photo 33



Photo 34



Photo 35

Piazza Corpus Domini

At the crossing with Via Palazzo di Città, turn right, go up through a short slide and reach the square of Corpus Christi, paved with well practicable large stone plates (photo 36).



Photo 36

Continuation of via Porta Palatina

The characteristics of the itinerary are similar to those of via Porta Palatina:

- The two sides sidewalks, paved with large stone plates, are of limited width;
- The roadway is always made of stone plates but superficially rough and with quite large joints which are not comfortably practicable (photo 37).



Photo 37



Photo 38

Via San Tommaso

Beyond via Garibaldi you enter via San Tommaso (photo 38), which presents:

- Paving without sidewalks, difficult and unpractical, porphyry, rather irregular, superficially rough and with large joints, sometimes very sunken, with a central way in stone plates large about 35 cm (photo 39);
- via San Tommaso widens presenting on the left a pedestrian path, always in porphyry, protected by metal stakes (photo 40).
- It's evident that a person on a wheelchair, autonomously, must do this path very carefully and with big effort. With a help, the person driving must be expert.



Photo 39



Photo 40

At this point the City Tour plans to go through via Barbaroux to get to via Viotti.

Since the characteristics of via Barbaroux (between via San Tommaso and via XX Settembre) present some problems, it's recommended:

1. **itinerary 1**: it follows the itinerary suggested by the City Tour, i.e. via Barbaroux;
2. **itinerary 2**: it goes on in via San Tommaso to get until via Pietro Micca, with left turn in via Pietro Micca and then right turn in via Viotti.

Itinerary 1. Via Barbaroux

From via San Tommaso you turn left to Via Barbaroux.

Via Barbaroux (piece from via San Tommaso to via XX Settembre):

- the side sidewalks are rather narrow (100 cm), paved with large stone plates, the road is paved with porphyry blocks with transversal inclination towards the centre of the road;
- Mid-term, transversely across the entire width of Via Barbaroux, there is a rising road, which includes part of the sidewalk (photo 41). - This increase is trapezoidal (photo 42) with a slide to rise (55 cm), a plain part (50 cm) and a slide down (55 cm) with a slope of the inclined parts of about 18%. This increase is a clear obstacle for self-pushing wheelchairs; to overcome it, it's necessary that:
 - o The person on the wheelchair is autonomous, has excellent mobility of the upper limbs, excellent balance, excellent skill or
 - o The person on the wheelchair is helped by an expert, who knows how to move a wheelchair, to prevent capsizing.

At the end of via Barbaroux you get to the crossing with via XX Settembre and you can cross it on the left or on the right.



Photo 41



Photo 42

Crossing of via XX Settembre opposite via Barbaroux: on the left (looking towards Piazza Castello):

- It's easily practicable, although the presence of a limited stripe of porphyry blocks which split the sidewalk from the asphalted road and the presence of the tram tracks (photo 43).
- After crossing you easily go under the arcades (left side, photo 44) of via Barbaroux until the pedestrian cross placed at the junction of via Barbaroux, via Pietro Micca and the entrance in piazza Castello (photo 51).

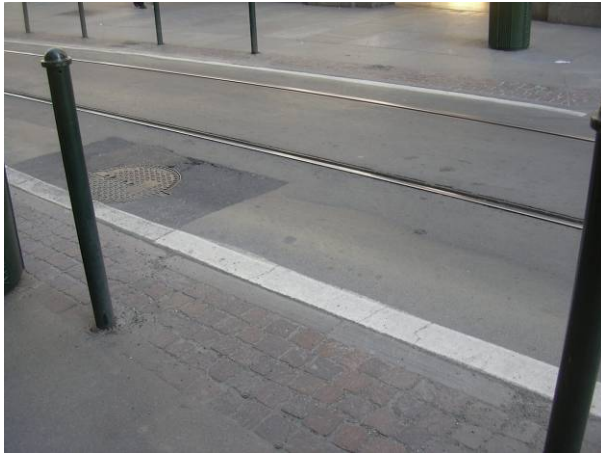


Photo 43



Photo 44

Crossing of via XX Settembre opposite via Barbaroux: on the right (looking towards Piazza Castello): (photo 45):

- Same characteristics of the crossing on the left, described above.
- The sidewalk on the right of via Barbaroux (without arcades) not very large, must be done carefully on a wheelchair because there's a part with high transversal inclination (photo 46).
- you get until the crossing with via Pietro Micca: in this point it's impossible to cross via Pietro Micca because there is no pedestrian crossing and there is a step: you need to go through the diagonal crossing of via Barbaroux (photo 47, 48, 49), go up on the drive way slope (for the people on wheelchair is necessary to pay attention) (photo 50), turn slightly on the right under the arcades and take the pedestrian crossing at the entrance of piazza Castello/ via Barbaroux/ via Pietro Micca (photo 51).
- Finally, you do the pedestrian crossing at the beginning of via Viotti (photo 52) and you go under the arcade area of via Viotti.



Photo 45



Photo 46



Photo 47



Photo 48



Photo 49



Photo 50



Photo 51



Photo 52



Photo 60



Photo 61

Via Viotti - S. Federico Gallery

- The paving of via Viotti is fully practicable, plain, without reliefs or obstacles (photo 62, 63, 65). The crossing with via Monte di Pietà presents some disconnection (photo 64).
- On the contrary it is problematic the crossing with via Bertola, which brings to the entrance of the San Federico Gallery, because, due to work in progress, the pedestrian crossing is not practicable (photo 66) and, on its left, there is another one, with yellow stripes on the ground (photo 67), which is not accessible due to a step of about 13 cm
- To overcome the obstacle of the step, you need to turn left, cross via Viotti (photo 68), go along via Bertola and use the accessible pedestrian crossing of via Roma (photo 69, 70), then turn right to go along via Bertola and turn left to enter the San Federico Gallery.



Photo 62

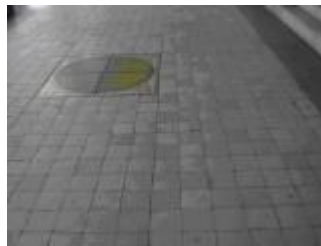


Photo 63



Photo 64



Photo 65



Photo 66



Photo 67



Photo 68



Photo 69



Photo 70

Piazza San Carlo-via Maria Vittoria- Egyptian Museum

- The pedestrian crossing of via Roma, at the entrance in piazza San Carlo, is easy, although porphyry, enough linear and with well drafted joints (photo 71).
- Piazza san Carlo is well practicable, even with bad weather, thanks to the arcade (photo 72, 73).
- Also via Maria Vittoria is easily practicable (photo 74, 75).
- To get to the Egyptian Museum, you turn left in via Accademia delle Scienze, paved with large stone plates with two central parallel rows in porphyry (photo 77).
- It's underlined the presence:
 - o Of a zebra crossing (via Maria Vittoria/via Lagrange/via Accademia delle Scienze) with tactile paving (photo 76) to facilitate visually impaired and blind and
 - o Of a tactile stripe of paving which heads to the entrance of the Egyptian Museum (photo 78,79).



Photo 71



Photo 72



Photo 73



Photo 74

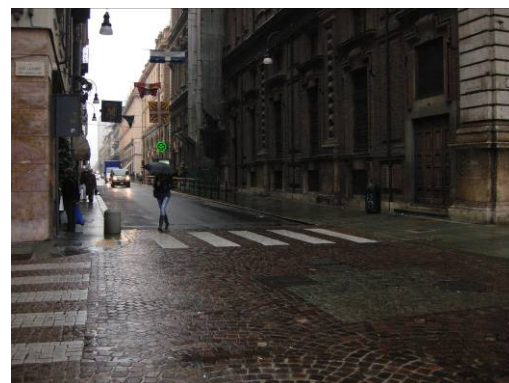


Photo 75



Photo 76



Photo 77



Photo 78



Photo 79

To remind is that this itinerary was **verified on the spot** by the Turismabile staff on the **19th February 2010**.

For Information:

TURISMABILE - Segreteria Operativa
Via San Marino, 10 10134 Torino
Tel. +39 011 319 81 45
Fax. +39 011 318 76 56
E-mail: segreteria@turismabile.it
www.turismabile.it



viaggiare senza limiti ...